



## UNICLICK INSTALLATION

**PLEASE READ ALL INSTALLATION INSTRUCTIONS CAREFULLY BEFORE YOU BEGIN INSTALLATION. IMPROPER INSTALLATION WILL VOID WARRANTY.**

This document supersedes all printed and electronic Installation, Care and Warranty information previously distributed for Elite Flooring.

- Always check the flooring planks for defects such as chips, color or sheen differences under well-lit conditions. Also check that the click channel is clean and free of debris. Always work out of multiple boxes to mix product to achieve proper pattern repeat and color appearance. Color variations between flooring, samples, and replacement material is expected and is not a product defect.
- If the appearance of a board is questionable for either dimensions or appearance, the installer should not use this piece. A replacement carton can be obtained through your dealer in a reasonable time.
- The person installing the floor is responsible to inspect all the flooring before and during its installation. If the installer believes the flooring is not correct due to color, grade, gloss, or any installation issues, the installer should not install this material. The retailer where the flooring was purchased should be contacted to address the issues. Continuing to install the product means that the installer accepted the visually suspect material for installation so the claim will be denied.

**NOTE: The Products can be installed above, on and below grade. The Products are installed as a floating floor only. Direct glue down applications require the removal of the attached pad and a full spread adhesive manufactured exclusively for LVP and LVT. Never use an adhesive that is recommended for multiple products. We recommend Stauf D737 PSA glue or equivalent. Follow the manufacturer's installation instructions.**

**Walls, subfloors, and installed floors in buildings and houses move. A minimum of 3/8" gap for expansion is recommended between the installed floor and any adjacent perimeter wall, vertical structure, or wood-based floor (laminated or hardwood).**

## INSTALLATION

### JOBSITE PREPARATION BEFORE INSTALLATION

The responsibility for proper subfloor preparation before flooring installation lies with the local flooring installer. Every plank and/or tile must be inspected prior to installation for color variation, finish condition, sheen variation, and quality. This inspection should be conducted with proper lighting available. Any boards that are not acceptable should not be installed. Contact your dealer immediately to obtain replacement boards. ELITE FLOORING is not responsible for the installation of flooring with obvious visual defects.

**Crawl spaces** – For the protection of the home, when installing a moisture barrier in a crawl space, minimum crawl spaces of 18" are required from the ground to the underside of the joists. A vapor barrier of 6 mil thick polyethylene film with 6" sealed lap joints should be used. Moisture resistant tape should be used as the vapor barrier sealant at the lap joints. (This same procedure can be used for installing film

vapor/moisture barriers over concrete subfloors). Venting for the crawl space should be at least 1.5% of the crawl space square footage. Vents should be located for cross-ventilation of the crawl space. Local regulations should always prevail.

Before floor installation, the room conditions in the installation area (temperature and moisture) should be at normal year-round conditions for at least one week prior to, during, and continuously after flooring installation. Acclimation is not required before installation unless the product has been stored at high temperatures just prior to installation. Recommended installation room conditions are temperatures between 45 to 105 degrees F for WPC and 40 to 110 degrees F for SPC. Never install below or above these temperatures. Normal room temperatures are use temperatures between 65 degrees and 85 degrees F.

## **REMOVING OLD ADHESIVES**

Asphaltic “cut-back” adhesives can stain the Products. These must be 100% removed, encapsulated, or covered with plywood underlayment. Some previously manufactured cutback adhesives contained asbestos fibers, which are not readily identifiable. Do not use power removal devices, which can create dust. The use of solvent-based adhesive removers is never recommended. NOTE: If d-limonene (citrus based) cleaners/removers are used (Orange All), subfloor must be thoroughly rinsed. If complete removal of old adhesives or covering them with plywood is not possible, the use of a Portland Based Leveling or Patching Compound is acceptable. Please follow manufacturer’s instructions carefully.

For “Recommended Work Practices for the Removal of Resilient Floor Coverings” write to the Resilient Floor Covering Institute, 966 Hungerford Dr., Suite12-B, Rockville, MD 20850.

## **SUBFLOOR REQUIREMENTS**

All subfloors must be dry, structurally sound to support the floor and to protect the home from moisture, free of debris and foreign matter, and flat to 3/16” in a 10-foot radius or 1/8” in a 6-foot radius. The substrate must be level and not slope more than 1 inch per 6 feet in any direction.

For concrete subfloors, the subfloor should be firm, flat, permanently dry, and clean. This includes both old and new concrete floors. New concrete slabs must cure in well-ventilated conditions for at least 60 days minimum before installing the floor. Concrete that is on or below grade should have a minimum-6mil poly film vapor/moisture barrier beneath the slab between the concrete and ground. Maximum moisture level per ASTM F1869 Calcium Chloride test method is 8lbs. per 1000 cft in 24 hours. The maximum level of relative humidity per ASTM 2170 test method is 80%. Electronic meter testing is not acceptable as a replacement for the use of these two tests. The pH of the concrete slab should be determined using ASTM F710. The pH test results should measure between 7-10.

These moisture and alkali levels must be met before it is acceptable to install the flooring. It is the-responsibility of the flooring installer or contractor to meet these requirements. We recommend that a vapor/moisture barrier be installed over the concrete subfloor. Elite Flooring does not accept claims related to damages or failure of the floor caused by excessive moisture, alkali and/or hydrostatic pressure. Do not install the new flooring over a concrete subfloor with high moisture, alkali or hydrostatic pressure conditions if it has not been mitigated or remediated. If moisture mitigation or remediation are required, the choice of technique to mitigate (concrete slab sealing, installation of 6 mil poly film under the flooring, etc.) is the sole responsibility of the flooring installer or contractor. Follow the chosen product manufacturer’s installation instructions.

The concrete subfloor must be smooth and free of roughness, excessive texture, irregularities in height, and abrupt elevation changes.

The subfloors must be free of any contaminants, harmful substances or foreign materials that could reduce adhesion, adversely impact the installed plank performance or rate of moisture dissipation from the subfloor or cause the installed flooring to discolor.

All pre-existing tiles and other approved floor coverings must be well bonded to the base subfloor. Ceramic, quarry, terrazzo, and similar types of tiles require filling of grout joints and imperfections using floor patching materials in commercial installations. If the product is glued down, the grout joints will need to be filled. It is key that the subfloor flatness tolerance be met to accept all installations.

For plywood, OSB, and particleboard subfloors to be acceptable for flooring installation, they must be dry (maximum 12% moisture content) and properly secured to accept a top floor. The maximum subfloor deflection allowed must not be more than L/360. The subfloor must be secured every 6" along joists with nails or screws to avoid deflection or excessive vertical movement of the subfloor. Subfloor deflection may cause squeaking or popping sounds in both the subfloor and the installed floor. Our warranties do not cover any flooring issues caused by inadequate substructures. The subfloor must be level and flat per the specification and tolerance stated. High spots must be ground down and low spots must be filled with a Portland cement leveling compound.

Please note that the Products are not approved for installation over any type of carpet.

**NOTE: Never install the Products over any type of floating floor. All subfloors that are not concrete must be firmly bonded.**

**NOTE: Never install the Products over a below grade VCT (vinyl composition tile).**

Tiles including ceramic, resilient, and sheet vinyl must be well bonded to the subfloor, must be level and flat, and must be clean. Existing vinyl floors should not be sanded as they may contain asbestos.

## **INSTALLATION TOOLS**

- Safety Glasses
- Broom/Vacuum
- Tapping block
- 10ft straight edge
- 3/8" spacers
- Pull bar
- Saw
- Utility knife
- Pencil
- Tape measure
- Ruler
- Chalk string

## **ACCEPTABLE SUBFLOOR TYPES**

- CDX Underlayment Grade Plywood (minimum of 5/8" thickness)
- Underlayment Grade Particleboard (only for floating installation)
- OSB (minimum 3/4", 23/32" thickness)
- Concrete slab
- Ceramic Tile – one layer well Bonded
- Resilient Tile – one layer well bonded (Not Below Grade)
- Sheet Vinyl – one layer well bonded

## **DO NOT INSTALL OVER**

- VCT installed on or below grade concrete.
- Existing cushion-backed vinyl flooring
- Carpet
- Rooms with sloping floors or floor drains

Wood underlayment's, parquet or hardwood flooring that has been installed directly over concrete. Do not install over any floating floor.

## BASIC INSTALLATION FOR THE PRODUCTS WITH UNIPUSH LOCKING SYSTEM

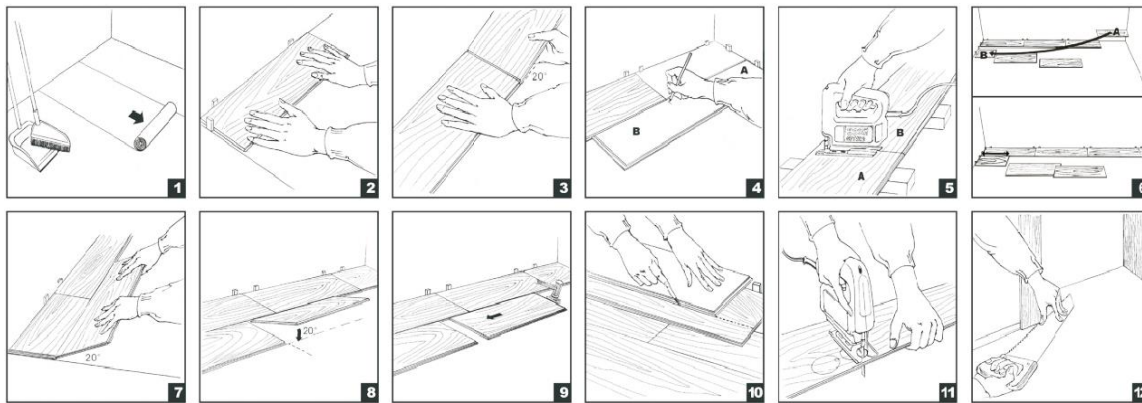
All trades must finish, and the installation area must be cleared and cleaned of debris that can damage the Product before installing the flooring. While the Products are dimensionally stable, buildings, walls, and existing hardwood and laminate floors will expand and contract. Because of this, we recommend for all installations, both floating floor and glue down types, that an expansion gap of at least 3/8" be left for expansion between the Products, any vertical surface, an adjacent perimeter wall or wood-based floor (laminate or hardwood).

As stated earlier, always work out of multiple boxes to mix product to achieve proper pattern repeat and color mix for the look of natural wood. A minimum of 3 boxes of product is recommended. Inspect each plank or tile in good light for visual defects. If they show visual faults or damage, do not install them. It is the responsibility of the installer to ensure that the appearance of the finished floor meets the consumer's expectations.

The Products are for indoor use. They will not be warranted when installed in locations or conditions not recommended for this product.

## INSTALLATION OF THE PRODUCTS WITH UNILIN ANGLE-TAP LOCKING SYSTEM

This locking system is designed to be installed utilizing the floating method. Always use the proper expansion space. Undercut all doorjamb. Never fasten moldings or transition strips to the planks. When product is stored at the installation site, it should be stored in the room where it will be installed.



Before installing the floor, confirm that the room and walls are straight and square. Where possible, use an outside wall to start your installation. Measure 3/8" from each end of the starting wall and snap a chalk line to leave a straight starting line on the subfloor. The 3/8" spacing will confirm the expansion space required for the installed floor. It also shows whether the wall is straight or bowed. The chalk line is to be used as the guide for installation. If the wall is not straight, follow the chalk line for the first-row plank installation to take this into account.

- A. When using a product with attached pad, please start at picture #2.
- B. Remove the tongue on the side of the panels that face the wall. This will ensure that the decorative surface of the SPC floor is well under the finished trim when installed. Use a utility knife to score through the tongue several times until it easily snaps off. Start in a room corner by

placing the first panel with its trimmed side facing the wall. Leave expansion space along each wall to maintain a gap of 10mm (3/8") between the wall and the flooring.

- C. To attach the second panel, insert the end tongue of the panel into the end groove of the first panel at a 20-degree angle. Lower the panel flat to the floor. Align the edges carefully.
- D. Continue connecting the first row of planks until you reach the last full panel. Fit the last panel by rotating the panel 180 degrees with the pattern side upward, place it beside the row, and mark it.
- E. Saw off the excess plank. Attach as described above.
- F. Begin the next row with the off-cut piece from the previous row to stagger the pattern. Pieces should be a minimum of 20cm (8") long and joint offset should be at least 20cm (8").
- G. Start the second row by pushing the long side tongue of the panel into the long side groove of the very first panel at about a 20-degree angle. When lowered, the plank will click into place.
- H. Attach the second panel of the new row on the short side as described above. Then attach the long side of the panel and lightly tap both the short and long panels to engage.
- I. To fit the last row, lay a panel on top of the previous row. With the tongue to the wall, lay another panel upside down on the one to be measured and use it as a ruler. Don't forget to allow room for 1/4" spacers. Cut the panel and attach it into position.
- J. Door frames and heating vents also require expansion room. First cut the panel to the correct length. Then place the cut panel next to its actual position, use a ruler to measure the areas to be cut out, and mark them. Cut out the marked points allowing for necessary expansion distance on each side.
- K. Door frames can be trimmed by turning a panel upside down and using a handsaw to cut away the necessary height so that panels slide easily under the frames.

The Products can be full spread glued down. When full spreading the products that include an attached pad, the pad must first be removed from the planks before gluing the product to the subfloor. Elite Flooring recommends the use of Stauf D-737, LVP-777, or Taylor 2091 Pinnacle PSA type adhesives or equivalents for full spreading WPC. Please see the manufacturer's instructions for proper installation methods. Where the use of a caulk is needed, we recommend a 100% silicone caulk and do not approve the use of acrylic caulks. High quality silicone caulks remain flexible and will allow the installed floor to continue to float and move with temperature changes whereas acrylic caulks will harden over time and stop this from occurring.

The products include an attached underlayment pad. The click side and end joints are designed to work with this specific pad. Elite Flooring does not warrant the product with additional pad being installed under it.

## **REPAIRS**

The Products are durable; however, planks can be damaged. If the damaged plank is near the perimeter of the room, the best technique is to carefully unlock the planks until the damaged plank is removed. Replace the damaged plank and reassemble the flooring. If the damaged plank is in the center of the room, then the following procedure should be followed:

1. Use 3M Blue Tape around the perimeter of the damaged plank to be replaced to protect the surrounding planks from damage.
2. Using a utility knife, make a cut completely through the center of the damaged plank the length of the plank.

3. Carefully remove the cut pieces of the damaged flooring and clean and vacuum the exposed area.
4. Use a utility knife to remove the tongue from the long and short side of the replacement plank.
5. Remove 1.5 inches of the groove on the long side of the plank from the tongue end using a utility knife.
6. Apply a small bead of an Ethyl Cyanoacrylate adhesive super glue to the groove of the planks in the floor.
7. Insert the replacement plank into the exposed area locking the long-grooved side into the existing floor. The tongue end of the replacement plank will overlap the existing floor until the plank is completely inserted.
8. Use a scrap piece of the flooring as a tapping block to lightly tap the groove end into place. Use a utility blade to adjust the opposite end as you tap the end joint together.
9. Weight the plank down until the super glue is completely set.

## FINISHING MOLDING



Reducer molding is used to finish flooring when the adjoining surface is lower than the WPC flooring or when flooring meets carpet. Position the U track 7mm leaving expansion gap of at least ¼” from each edge of the track. Screw, nail, or glue down the track directly to the subfloor and then insert the reducing strip into the track.

T-molding is used to finish flooring and add expansion when two level surfaces meet in doorways. Install the same as above. Residential Installations do not require the use of T Moldings.

Commercial installations are recommended to install T-moldings in every doorway and if the maximum room run size is equal to or greater than 100 ft x 100 ft. Minimum of ½” of perimeter expansion space is recommended for large commercial rooms.

Landing molding is used to finish flooring on landings or stair edges. Moldings need to be glued and screwed down to the sub-floor for safety and stability. Color fill should be used to cover counter sunk screws.

To finish the perimeter of the room, install quarter round molding using finishing nails. Quarter round molding is nailed directly into the baseboard.

## RADIANT HEATED FLOORS

Floating floors can be installed over certain types of radiant heated floors. If glue down is an option, then follow the manufacturer’s installation instructions when full spreading our flooring with an approved glue.

### WHEN INSTALLING OVER A RADIANT HEATED FLOOR:

1. A newly installed radiant heated floor must be operational for at least four (4) weeks prior to the installation with the temperature set between 65 to 85 degrees F to ensure that the subfloor has been dried.
2. Existing radiant heated floors should be set to a minimum temperature of 65°F (18.3°C) degrees F for a minimum of 4 days before, during and 48 hours after the completion of the installation. This will ensure

that the flooring will acclimate properly before the installation begins. Upon completion of the installation, gradually increase temperature in increments of 5° F per hour until desired temperature is achieved. Never exceed 85 degrees.

3. Wood subfloors should never exceed 10% moisture content as measured by a calibrated wood moisture meter.
4. Concrete subfloors must be dry using the tests referenced above.
5. Ground floors using the radiant heating system should have a proper moisture barrier beneath it.
6. The recommended range of relative humidity is 35%-55% and the room temperature should be between 65-85 degrees F for the delivery of the flooring, acclimation, and installation.
7. The flooring must acclimate at the stated temperature range for at least 48 hours prior to installation in the room to be installed.
8. Keeping the temperature of the room constant will keep a stable environment for the flooring as well as the home.
9. The floor surface temperature must always stay below 85 degrees F.
10. At no time should the relative humidity in the room with the installed flooring fall below 30% during the life of the product.
11. **Electric Radiant Floors** consist of electric cables (or) mats of electrically conductive materials mounted on the subfloor below the floor covering. We recommend that the heating elements be separated from the flooring by a distance of at least ½ inch. Maximum operating subfloor temperature should never exceed 85°F. Subfloor levelers used to install electrical radiant floors should have a minimum of 3000 psi compressive strength. **Follow the electric radiant floor manufacturer's installation instructions.**

## **SUN ROOMS**

Sunrooms or areas that may be isolated from the main living area of the home are recommended areas of use for the Products if they are limited to 500 sf maximum.

If there will be no heat in the wintertime and you wish to use the area, you must bring the room to normal room temperature (65-75 degrees F) before walking on the floor.

Exposure of the floor to prolonged periods of sunlight is not recommended. Drapes and/or blinds are recommended for use during peak sunlight periods. Prolonged direct sunlight exposure can result in discoloration, and excessive temperatures may cause tile/plank expansion or delamination.

During installation, please leave the ¼" expansion at all walls and any vertical surface in this room.

## **CABINETS**

Cabinets may be installed on top of the Products if they are wall mounted.

Center Islands may be installed on top of the Products if they are free standing.

If cabinets or center Islands are being fastened to the floor a 3/4" expansion hole must be used where the bolts enter through the Products into the subfloor.

Cabinets and Center Islands may be installed on the Products and fastened if the Products are full spread. Any attached pad must be removed from the plank before full spreading adhesive.

## **POOL TABLES**

Pool tables in a residential environment may be installed on the Products either full spread glue down or floating. In a residence, there is a limit of one pool table per room.

Pool tables in a commercial environment over SPC must be full spread. When full spreading the Products that has an attached pad, the pad must first be removed from the plank before gluing the product to the subfloor.

Multiple pool tables in residential or commercial environments over the Products must be full spread glue down.

When full spreading a Product that has an attached pad, the pad must first be removed from the plank before gluing the product to the subfloor.

REV: 24 August 2023